

X  
X  
X  
X  
X  
X  
X  
X  
X  
X  
X  
X  
X  
X  
X  
X  
X  
X

# TREASURE > HUNT <



FREE PATTERN

XXXXXXXXXXXXXXXXXXXXXXXXXXXX





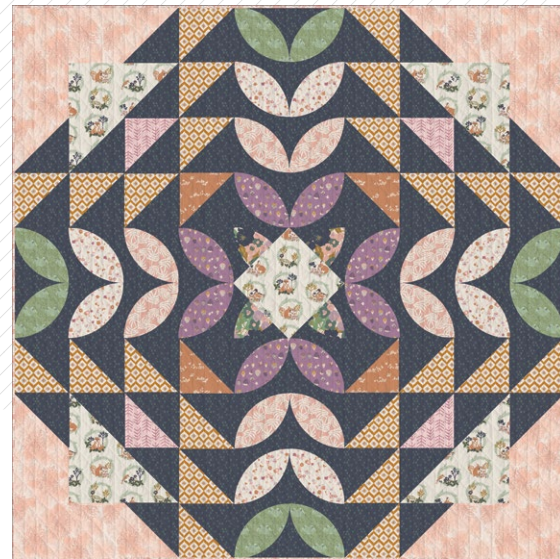
# TREASURE HUNT

# HUNT

QUILT DESIGNED BY AGFstudio



FABRICS DESIGNED BY SHARON HOLLAND



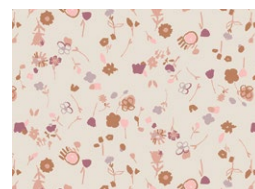
LLP-56702  
FOREST FRIENDS



LLP-56701  
BERRY PICKING



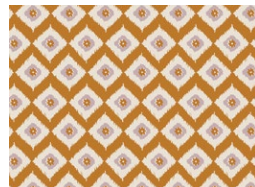
LLP-56706  
FERNGULLY



LLP-56705  
BUDDING ARTIST



LLP-56713  
ODE TO TOADY



LLP-56707  
LILLIPUTIAN



LLP-56714  
PINEY WOODS



LLP-56709  
FIELD DAY



LLP-56703  
TWINKLE TWINKLE GALAXY



LLP-56700  
FULL BLOOM



FEEL THE DIFFERENCE © 2021 Courtesy of Art Gallery Quilts LLC. All Rights Reserved.

ADDITIONAL BLENDERS FOR THIS PROJECT



**FE-518**  
BALLERINA

# TREASURE HUNT

FINISHED SIZE | 70" x 70"

## FABRIC REQUIREMENTS

Fabric <b>A</b>	LLP-56702	1 yd.
Fabric <b>B</b>	FE-518	1 yd.
Fabric <b>C</b>	LLP-56701	½ yd.
Fabric <b>D</b>	LLP-56706	¾ yd.
Fabric <b>E</b>	LLP-56705	½ yd.
Fabric <b>F</b>	LLP-56713	½ yd.
Fabric <b>G</b>	LLP-56707	¾ yd.
Fabric <b>H</b>	LLP-56714	¼ yd.
Fabric <b>I</b>	LLP-56709	¼ yd.
Fabric <b>J</b>	LLP-56703	2¾ yd.
Fabric <b>K</b>	LLP-56700	¼ yd.

### BACKING FABRIC

LLP-56705 4 ½ yds (*Suggested*)

### BINDING FABRIC

Fabric **D** LLP-56706 (*Included*)

## CUTTING DIRECTIONS

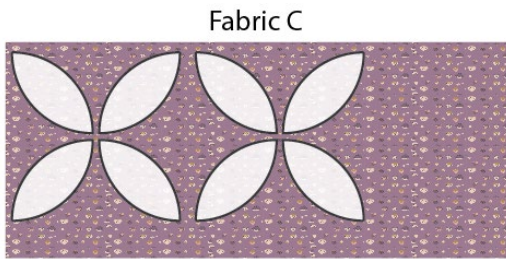
¼" seam allowances are included.  
WOF means width of fabric.

- Four (4) 7½" squares from fabric **A**.
  - Four (4) 7⅞" squares from fabric **A**.
  - One (1) 10½" square (on point) from fabric **A**.
  - Four (4) 7⅞" squares from fabric **B**.
  - Twelve (12) 7½" squares from fabric **B**.
  - Eight (8) templates from fabric **C**.
  - Eight (8) templates from fabric **D**.
  - Eight (8) templates from fabric **E**.
  - Eight (8) templates from fabric **F**.
  - Twelve (12) 7⅞" squares from fabric **G**.
  - Two (2) 7⅞" squares from fabric **H**.
  - Two (2) 7⅞" squares from fabric **I**.
  - Twenty six (26) 7⅞" squares from fabric **J**.
  - Thirty two (32) 7½" squares from fabric **J**.
  - Two (2) templates from fabric **K**.
- Follow the diagram below for the cutting instruction for fabrics **A**, **C** and **F**.

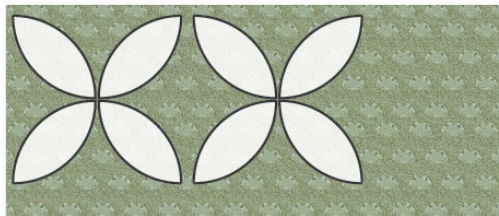


Fabric A





Fabric C



Fabric F

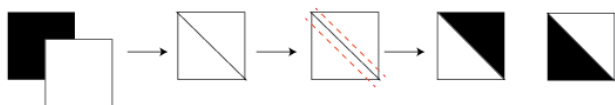
DIAGRAM 1

## CONSTRUCTION

*Sew all rights sides together with 1/4" seam allowance.*

### HST construction

- Pair two (2) 7 7/8" fabric squares, right sides facing together.
- Draw a line diagonally corner to corner using a mechanical pencil or frixion pen.
- Stitch 1/4" on each side of the drawn lines.
- Cut the pieces apart along the marked diagonal line.
- Press and trim to 7 1/2" x 7 1/2".



- To accomplish the HST construction take four (4) 7 7/8" squares from fabrics **A** and **B**, two (2) 7 7/8" squares from fabric **H**, **I**, twenty (20) 7 7/8" squares from fabric **J** and twelve (12) 7 7/8" squares from fabric **G**.

DIAGRAM 2

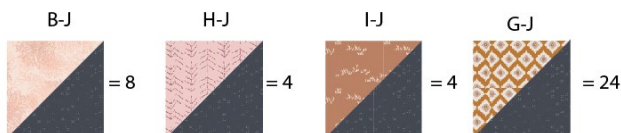


DIAGRAM 3

- For fabric **A**, make sure to cut two (2) 7 7/8" squares from left to right and two (2) 7 7/8" squares from right to left.
- This way you will be able to maintain the direction of the fabric.

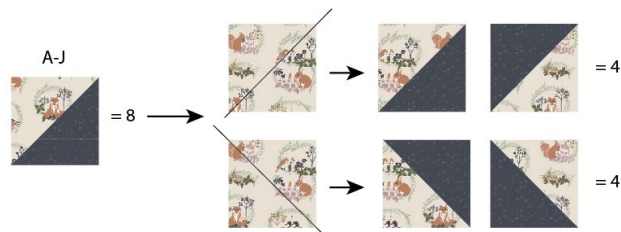


DIAGRAM 4

- Take one (1) 7 7/8" square from fabric **J** and one (1) petal template from fabric **K** and place it on top of the block as in the diagram below.
- Make sure to place the petal template leaving space for the seam allowance for fabric **J**.
- Top stitch around the petal using straight stitch or zig zag stitch.
- Then, cut at the diagonal.

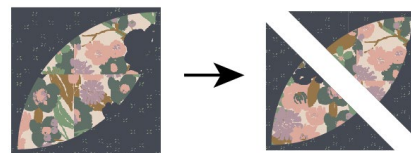


DIAGRAM 5

- Take another 7 7/8" square from fabric **J** and one (1) petal template from fabric **K** and Repeat the same instruction as Diagram 5.

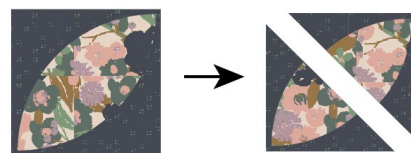


DIAGRAM 6

- Join one unit on one corner of the 10 1/2" square from fabric **A** and the other half on the other corner of the piece.
- Repeat the same previous steps in order to complete your center block, which should measure 14 1/2" x 14 1/2".

## ASSEMBLING THE TOP

Sew all rights sides together with 1/4" seam allowance. Press open.



DIAGRAM 7

- Take eight (8) petal template from fabrics **C, D, E, F** and thirty two (32) 7½" squares from fabric **J** and pair each petal following the diagram below.
- Use straight stitch or zig zag stitch to secure the petals.

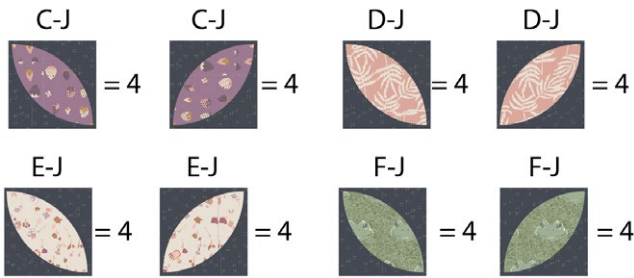


DIAGRAM 8

- Join two (2) **C-J** blocks together, two (2) **D-J**, two (2) **E-J** and two (2) **F-J** following the diagram below.

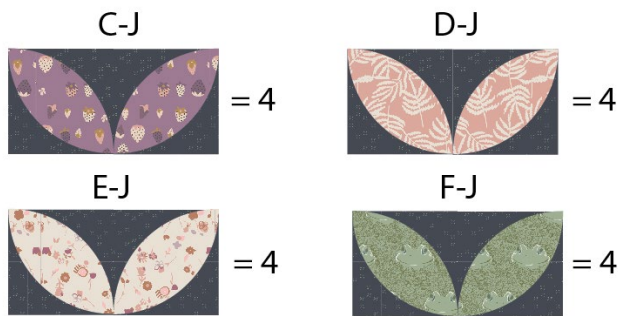


DIAGRAM 9

- To assemble your quilt top, join your pieces row by row in the following order:

Row 1: **B, B, B-J, G-J, F-J, G-J, B-J, B, B**

Row 2: **B, A, A-J, G-J, E-J, G-J, A-J, A, B**

Row 3: **B-J, A-J, H-J, G-J, D-J, G-J, H-J, A-J, B-J**

Row 4: **G-J, G-J, G-J, I-J, C-J, I-J, I-J, G-J, G-J, G-J**

Row 5: **F-J, E-J, D-J, C-J, Center Block, C-J, D-J, E-J, F-J**

Row 6: **G-J, G-J, G-J, I-J, C-J, I-J, G-J, G-J, G-J**

Row 7: **B-J, A-J, H-J, G-J, D-J, G-J, H-J, A-J, B-J**

Row 8: **B, A, A-J, G-J, E-J, G-J, A-J, A, B**

Row 9: **B, B, B-J, G-J, F-J, G-J, B-J, B, B**



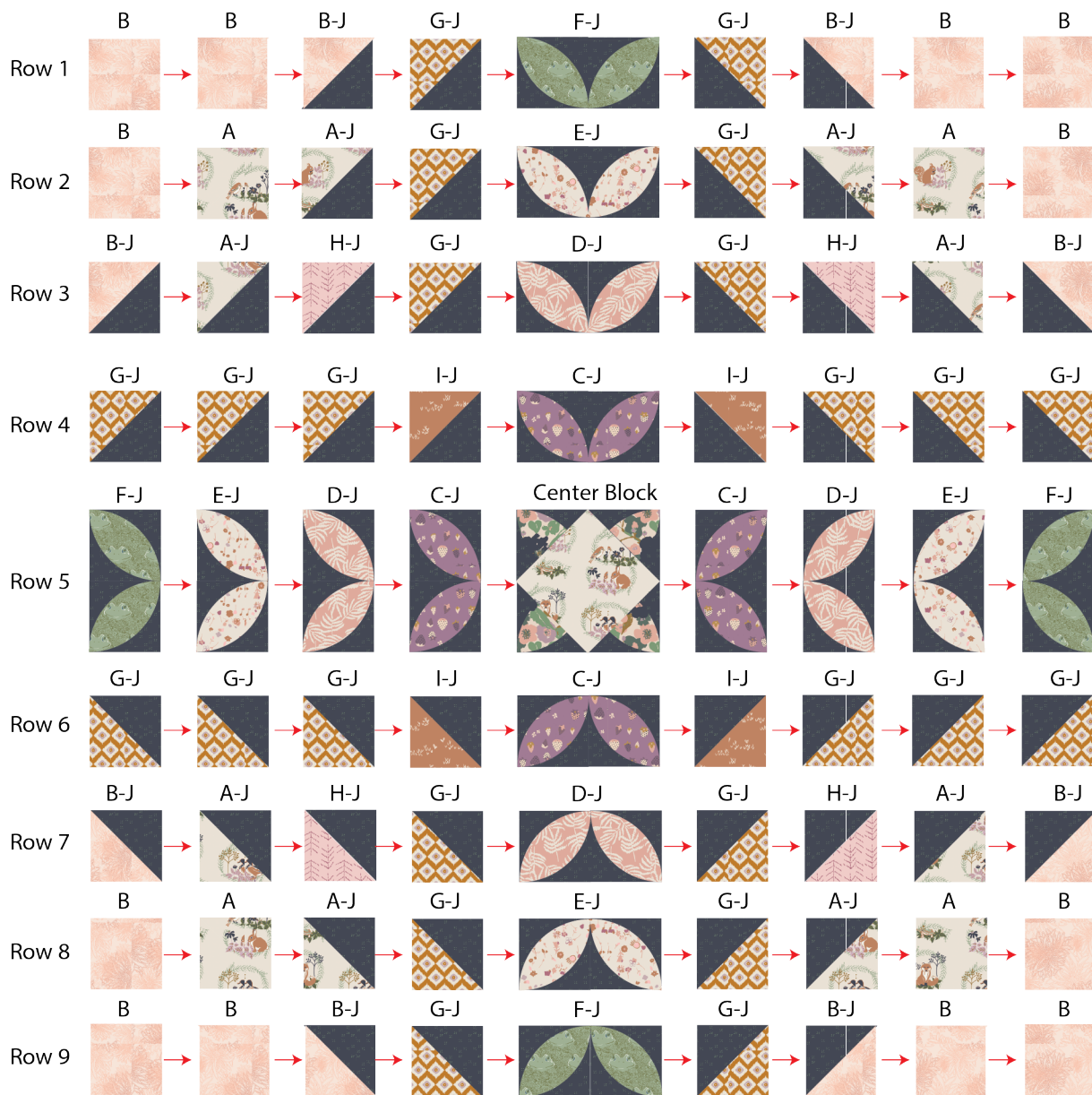


DIAGRAM 10

- Join rows 1-9.

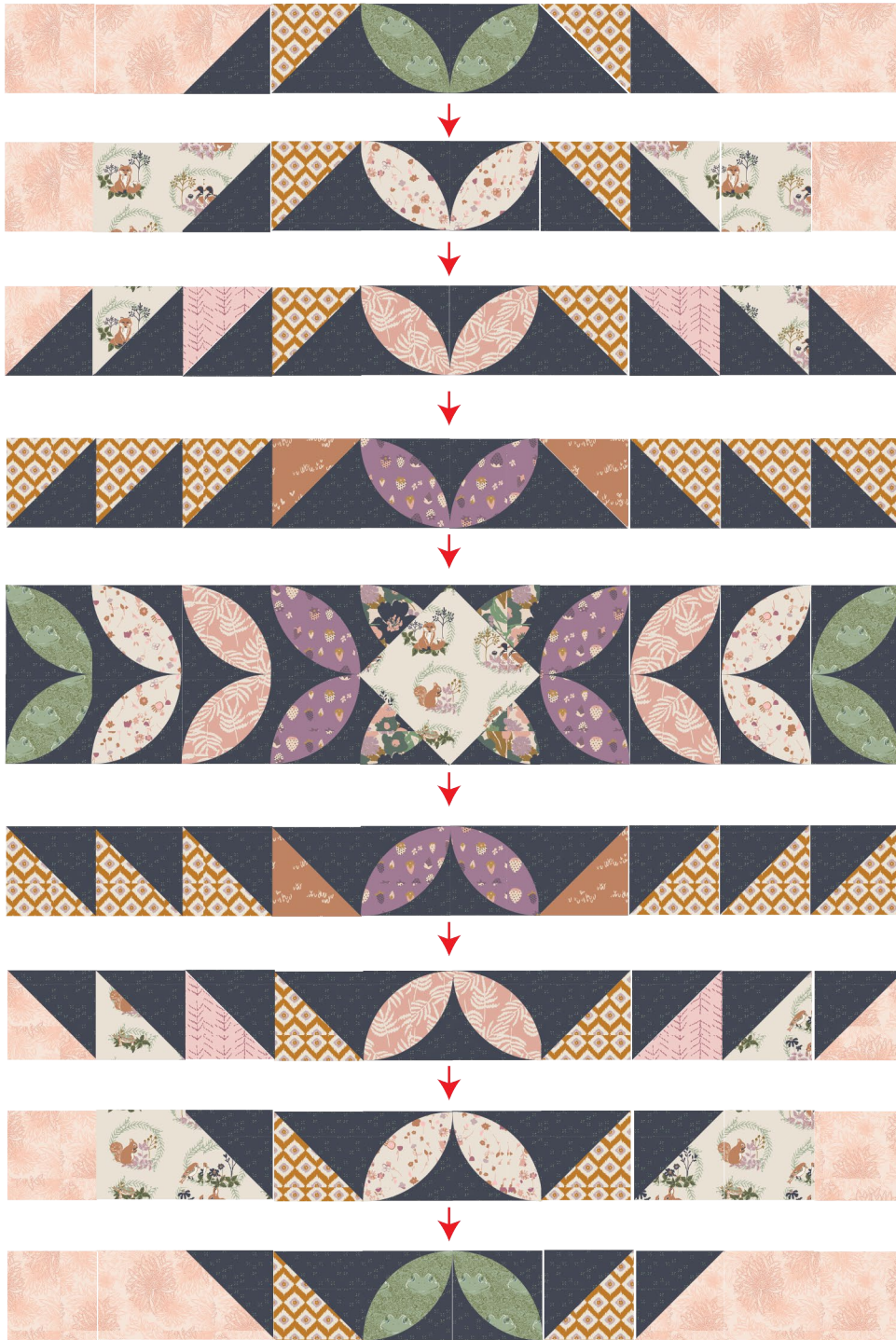


DIAGRAM 11



# QUILT ASSEMBLY

*Sew rights sides together.*

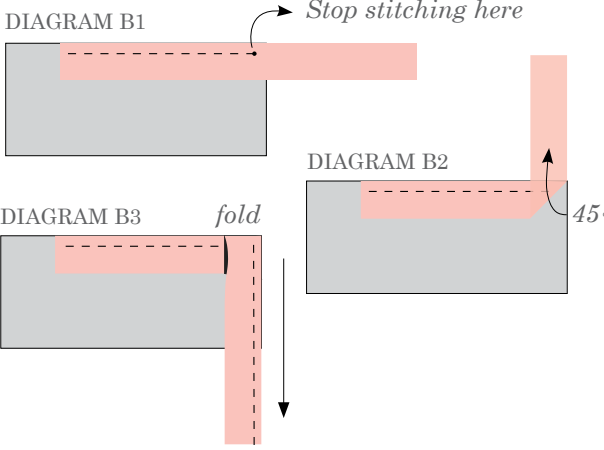
- Place BACKING FABRIC on a large surface wrong side up. Stretch it with masking tape against that surface.
- Place BATTING on top of backing fabric.
- Place TOP on top of the batting with right side facing up. Smooth away wrinkles using your hands.
- Pin all layers together and baste with basting thread, using long stitches. You can also use safety pins to join the layers.
- Machine or hand quilt starting at the center and working towards the corners. Remember that quilting motifs are a matter of personal preference. Have fun choosing yours!
- After you finished, trim excess of any fabric or batting, squaring the quilt to proceed to bind it.

- Stop stitching before you reach the last 5 or 6 inches. Cut the threads and remove the quilt from under the machine presser foot. Lay the loose ends of the binding flat along the quilt edge, folding the ends back on themselves where they meet. Press them together to form a crease. Using this crease as the stitching line, sew the two open ends of the binding with right sides together (you can help yourself marking with a pencil if the crease is difficult to see).
- Trim seam to ¼" and press open. Complete the sewing. Turn binding to back of the quilt, turn raw edge inside and stitch by hand using blind stitch.

# BINDING

*Sew rights sides together.*

- Cut enough strips 1½" wide by the width of the fabric **D** to make a final strip 290" long. Start sewing the binding strip in the middle of one of the sides of the quilt, placing the strip right side down and leaving an approximated 5" tail. Sew with ¼" seam allowance (using straight stitch), aligning the strip's raw edge with the quilt top's raw edge.
- Stop stitching ¼" before the edge of the quilt (DIAGRAM B 1). Clip the threads. Remove the quilt from under the machine presser foot. Fold the strip in a motion of 45° and upward, pressing with your fingers (DIAGRAM B2). Hold this fold with your finger, bring the strip down in line with the next edge, making a horizontal fold that aligns with the top edge of the quilt (DIAGRAM B3). Start sewing at ¼" of the border, stitching all the layers. Do the same in the four corners of the quilt.





*Congratulations  
& enjoy*



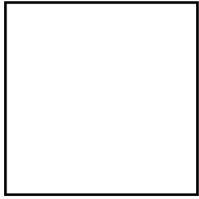
[artgalleryfabrics.com](http://artgalleryfabrics.com)

NOTE: While all possible care has been taken to ensure the accuracy of this pattern, We are not responsible for printing errors or the way in which individual work varies.

Please read instructions carefully before starting the construction of this quilt. If desired, wash and iron your fabrics before starting to cut.



Printer Test



1" Square

Template

